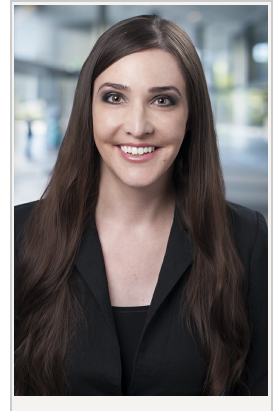


● **CATHERINE L. CARLISLE, ASSOCIATE**

■ Office: Los Angeles
✉ ccarlisle@yukelaw.com
☎ (213) 362-7777 252
☎ (213) 362-7788



Catherine (Cathy) Carlisle represents major international and domestic corporations in high-stakes civil litigation and enforcement matters, and advises clients on complex corporate and regulatory issues.

Cathy's litigation practice focuses on complex commercial litigation matters, including breach of contract, business tort, securities, antitrust, white collar defense, intellectual property, products liability, sporting goods litigation, and toxic tort issues. She frequently defends class action litigations, and also handles international litigation and arbitration matters. Cathy has extensive experience working with clients to develop effective case management strategies from the inception of the litigation process through trial and appeals. She is skilled in all aspects of case management, including motion practice, discovery, appellate litigation, and trial preparation, as well as in taking and defending depositions, presenting oral arguments, conducting negotiations, and representing clients in mediations and settlement discussions.

In addition to her litigation practice, Cathy advises corporate clients on a wide variety of issues, such as formation and structuring, corporate governance, operations, regulatory compliance, and risk management. She also handles sensitive internal investigations as well as complex government investigations and enforcement matters involving entities such as the Department of Transportation, U.S. Securities and Exchange Commission, and Federal Trade Commission. She is well-versed in all aspects of commercial contracts, from negotiating, drafting, and reviewing business-to-business contracts to litigating contract disputes.

Outside of her law practice, Cathy is an active member of the California Lawyers Association, serving as Vice-Chair of the International Law Section. She previously served as Editor in Chief for The California International Law Journal. Cathy has also taught courses on pretrial advocacy, advanced litigation writing, and depositions at Los Angeles area law schools.

Cathy graduated from Northwestern University Pritzker School of Law in 2009. While in law school, she served as the Membership & Comment Editor for the Journal of International Human Rights, and participated in a year-long clinical program with the School's Center for International Human Rights.

Prior to joining Yukevich | Cavanaugh, Ms. Carlisle practiced at large international law firms in Washington, D.C., New York, and Los Angeles.

Cathy is a member of the bars of California, New York, and the District of Columbia, and admitted to practice before many federal courts.

● **EDUCATION**

» Northwestern University School of Law, Juris Doctor (2009)

- » Carleton College, Bachelor of Arts (1998)
 - » Magna Cum Laude

• ADMISSIONS

- » California (2014)
- » New York (2010)
- » District of Columbia (2010)
- » USDC - Eastern District of California
- » USDC - Central District of California
- » USDC - Northern District of California
- » USDC - Southern District of California
- » USDC - Western District of New York
- » USDC - Southern District of New York
- » Ninth Circuit Court of Appeals
- » Second Circuit Court of Appeals

• ASSOCIATIONS

- » American Bar Association
- » Los Angeles County Bar Association
- » Women Lawyers Association of Los Angeles
- » Public Counsel Associate Leadership Board
- » State Bar of California, International Law, Public Law, and Litigation Sections

• ACCOLADES

- » *Best Lawyers in America: Ones to Watch*® (2022 Edition)
 - » Commercial Litigation
 - » Los Angeles
- » *Best Lawyers in America: Ones to Watch*® (2021 Edition)
 - » Commercial Litigation
 - » Los Angeles

• REPRESENTATIVE MATTERS

- » **Wisdom v. Easton Diamond Sports, LLC**
United States District Court, Los Angeles, CA – February 11, 2019